



EnerRocket™
CONTINUOUSLY SAFEGUARDING

ESC 200-12 FR

SMF VRLA RECHARGEABLE BATTERY

**LONG
LIFE
SERIES**

APPLICATIONS

- UPS Systems
- Telecommunication Systems
- Fire Alarm Safety & Security Systems
- Medical Equipment

COMPLIANCE STANDARDS

- IEC 60896 PART 21 & 22
- BS6290-4
- EUROBAT- HIGH Performance

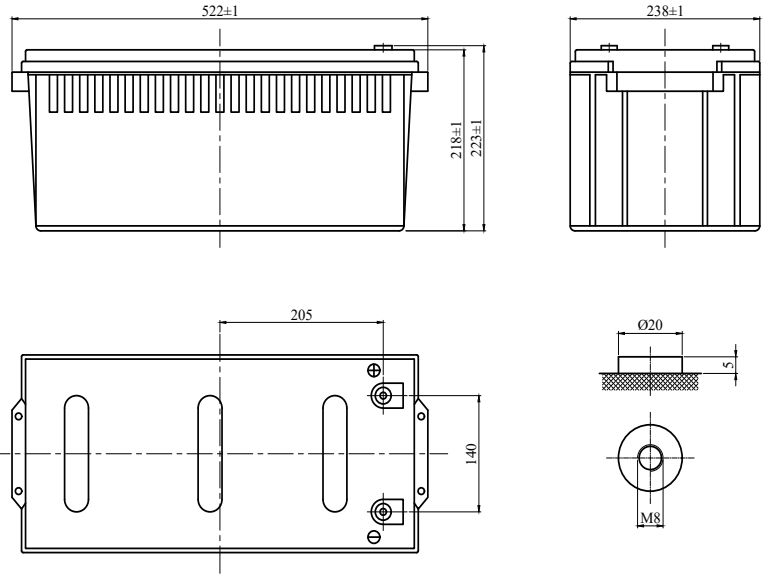
TECHNICAL FEATURES



- Non-Spillable Sealed Construction
- Absorbent Glass Mat System (AGM System)
- ABS (Acrylonitrile Butadiene Styrene) construction
- Gas Recombination
- Venting System for low internal pressure
- Low Self-Discharge
- Heavy-Duty, Highly Optimized Grids
- High Power Output

CHARACTERISTICS

| | | |
|---|-----------------------------|------------------------|
| Nominal Voltage | 12 V | |
| Design Life | 12 Years | |
| Capacity (25°C) | 10 Hour rate | 200Ah |
| Internal Resistance (25°C, 100% Charge) | ≤4.0 mΩ | |
| Self Discharge (20°C) | 1 Month | Remaining Capacity 97% |
| Operating Temperature | Discharge | -20°C - 60°C |
| | Charge | -10°C - 60°C |
| | Storage | -20°C - 60°C |
| Normal Operating Temperature | 25°C ± 3°C | |
| Maximum Discharge current (25°C) | 1000A (5sec) | |
| Maximum Charging current (25°C) | 60A | |
| Short Circuit Current | 3300A | |
| Charge Methods | 14.4 to 14.7 V | |
| Constant Voltage Charge 77°F (25°C) - Cycle use | Temp. Compensation -30mV/°C | |
| Charge methods | 13.4 to 13.8V | |
| Constant Voltage Charge 77°F (25°C) - Standby Use | Temp. Compensation -20mV/°C | |



SPECIFICATIONS

| Length | Width | Height | Total Height | Weight (kg) |
|--------|-------|--------|--------------|-------------|
| 522mm | 238mm | 218mm | 223mm | 59.1 ± 5% |

CONSTANT CURRENT DISCHARGE (Amperes) AT 25°C

| End Voltage Volts/Cell | 15min | 20min | 30min | 1h | 1.5h | 2h | 3h | 4h |
|------------------------|-------|-------|-------|-----|------|----|------|----|
| 1.60 | 327 | 280 | 196 | 129 | 91 | 71 | 50.3 | 44 |
| 1.65 | 308 | 269 | 188 | 126 | 88 | 68 | 49.1 | 43 |
| 1.70 | 288 | 259 | 181 | 123 | 85 | 65 | 48.2 | 41 |
| 1.75 | 269 | 250 | 175 | 120 | 83 | 64 | 47.1 | 40 |
| 1.80 | 250 | 240 | 168 | 117 | 80 | 62 | 45.7 | 39 |

CONSTANT POWER DISCHARGE (Watts) AT 25°C

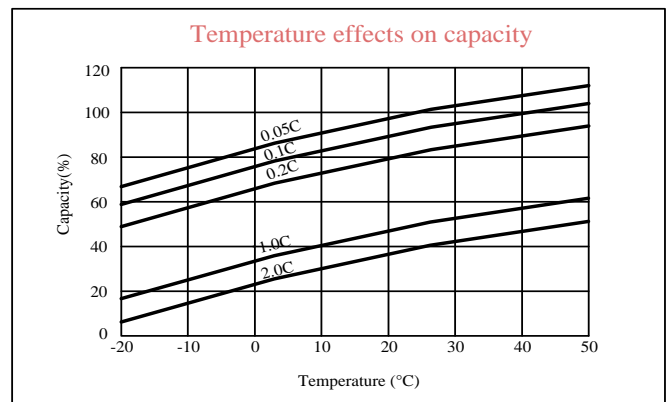
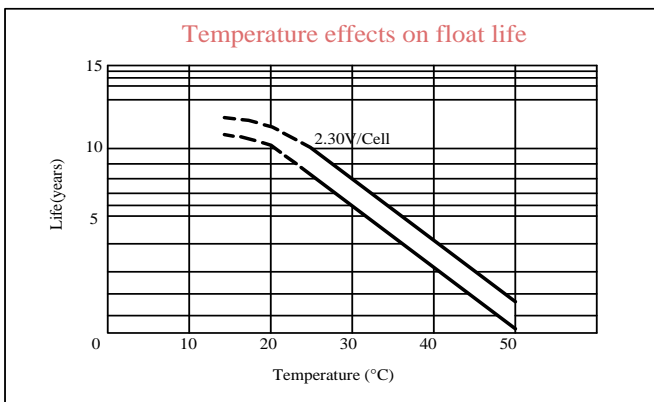
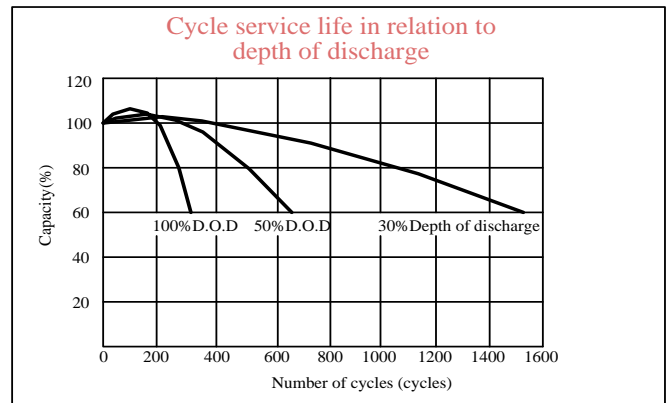
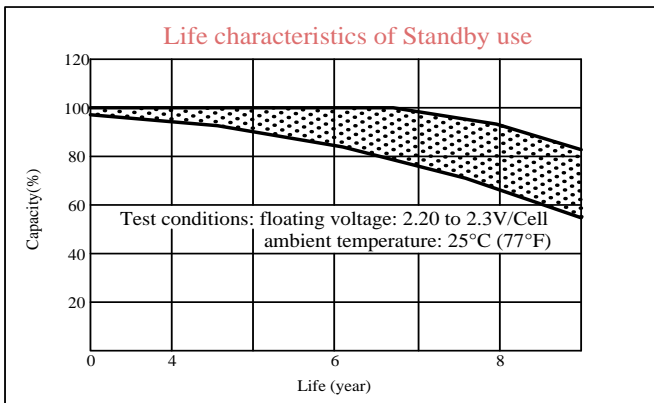
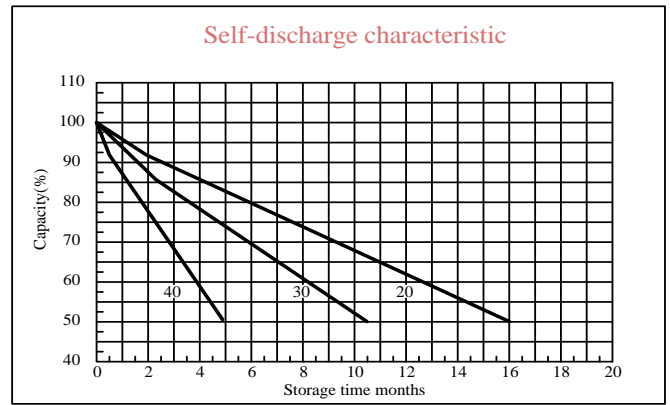
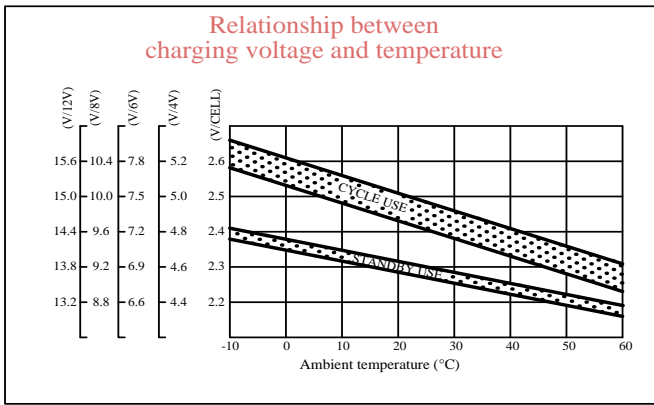
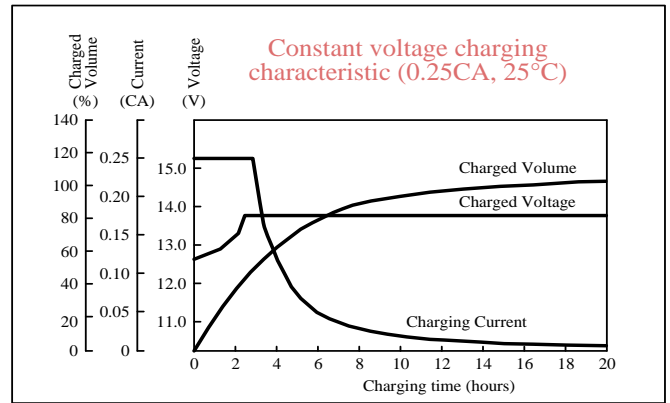
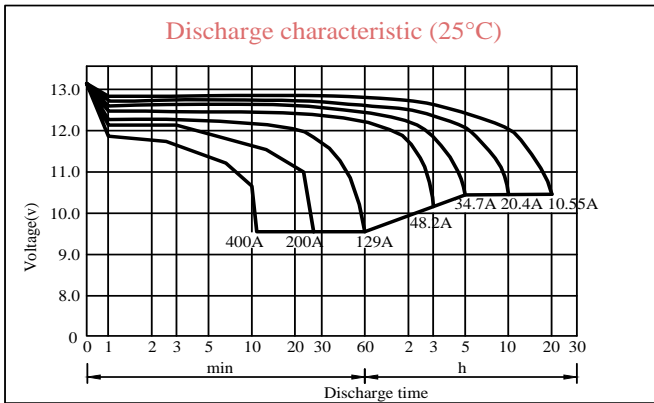
| End Voltage Volts/Cell | 15min | 20min | 30min | 1h | 1.5h | 2h | 3h | 4h |
|------------------------|-------|-------|-------|-----|------|-----|------|----|
| 1.60 | 566 | 480 | 374 | 248 | 181 | 137 | 97.4 | 82 |
| 1.65 | 547 | 464 | 360 | 243 | 177 | 134 | 96.1 | 79 |
| 1.70 | 530 | 449 | 347 | 238 | 173 | 131 | 94.8 | 77 |
| 1.75 | 512 | 434 | 332 | 233 | 169 | 128 | 93.4 | 75 |
| 1.80 | 482 | 409 | 319 | 228 | 164 | 124 | 92.4 | 73 |



ESC 200-12 FR

SMF VRLA RECHARGEABLE BATTERY

**LONG
LIFE
SERIES**



Note:
GPSGC reserves the right to make changes to the above values without any notice.
All data and discharge characteristics are average values based on actual discharge cycle tests performed and not minimum values.