



EnerRocket™
CONTINUOUSLY SAFEGUARDING

ES 12-12

SMF VRLA RECHARGEABLE BATTERY

**LONG
LIFE
SERIES**

APPLICATIONS

- UPS Systems
- Telecommunication Systems
- Fire Alarm Safety & Security Systems
- Medical Equipment

COMPLIANCE STANDARDS

- IEC 60896 PART 21 & 22
- BS6290-4

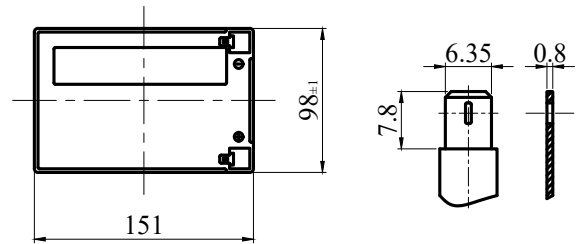
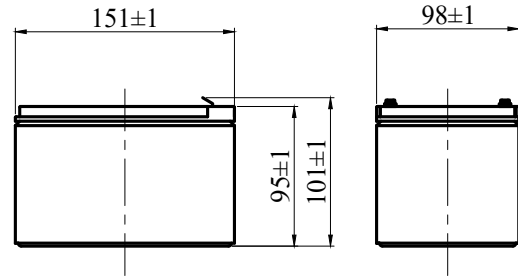
TECHNICAL FEATURES



- Non-Spillable Sealed Construction
- Seal Lead Acid Battery
- Absorbent Glass Mat System (AGM System)
- ABS (Acrylonitrile Butadiene Styrene) construction (FR optional)
- Gas Recombination
- Venting System for low internal pressure
- Low Self-Discharge
- Heavy-Duty, Highly Optimized Grids
- High Power Output
- Wide Operating Temperature
- Maintenance-Free Operation

CHARACTERISTICS

Nominal Voltage	12 V	
Design Life	10 Years	
Capacity 25°C (77°F)	20 Hour rate	12Ah
	10 Hour rate	11.4Ah
	5 Hour rate	10.25Ah
Internal Resistance (25°C, 100% Charge)	≤ 19 mΩ	
Self Discharge (20°C)	1 Month	Remaining Capacity 97%
Operating Temperature	Discharge	-20°C - 60°C
	Charge	-10°C - 60°C
	Storage	-20°C - 60°C
Normal Operating Temperature	25°C ± 3°C	
Maximum Discharge current	180A (5sec)	
Maximum Charging current	4.8A	
Short Circuit Current	600A	
Charge Methods	14.4 to 14.7V	
Constant Voltage Charge 77°F (25°C) - Cycle use	Temp. Compensation -30mV/°C	
Charge methods	13.4 to 13.8V	
Constant Voltage Charge 77°F (25°C) - Standby Use	Temp. Compensation -20mV/°C	



SPECIFICATIONS

Length	Width	Height	Total Height	Weight (kg)
151 mm	98 mm	95mm	101 mm	3.67 ± 5%

CONSTANT CURRENT DISCHARGE (Amperes) AT 25°C

End Voltage Volts/Cell	5min	10min	15min	30min	1h	3h	5h	10h	20h
1.60	46.4	31.7	24.8	13.8	8.14	3.18	2.12	1.18	0.61
1.65	45.0	30.8	24.3	13.5	8.04	3.15	2.10	1.17	0.61
1.70	43.5	29.9	23.7	13.3	7.94	3.12	2.07	1.16	0.61
1.75	42.1	29.0	23.2	13.0	7.85	3.09	2.05	1.14	0.60
1.80	40.6	28.2	22.6	12.7	7.75	3.06	2.02	1.12	0.59

CONSTANT POWER DISCHARGE (Watts) AT 25°C

End Voltage Volts/Cell	5min	10min	15min	30min	1h	3h	5h	10h	20h
1.60	86.2	58.7	46.7	27.0	16.1	6.50	4.20	2.36	1.22
1.65	84.1	57.7	46.0	26.6	16.0	6.44	4.17	2.33	1.21
1.70	81.9	56.6	45.3	26.2	15.8	6.37	4.14	2.31	1.20
1.75	79.8	55.6	44.6	25.8	15.7	6.31	4.11	2.29	1.18
1.80	77.6	54.6	43.9	25.4	15.5	6.24	4.08	2.26	1.17



ES 12-12

SMF VRLA RECHARGEABLE BATTERY

**LONG
LIFE
SERIES**

